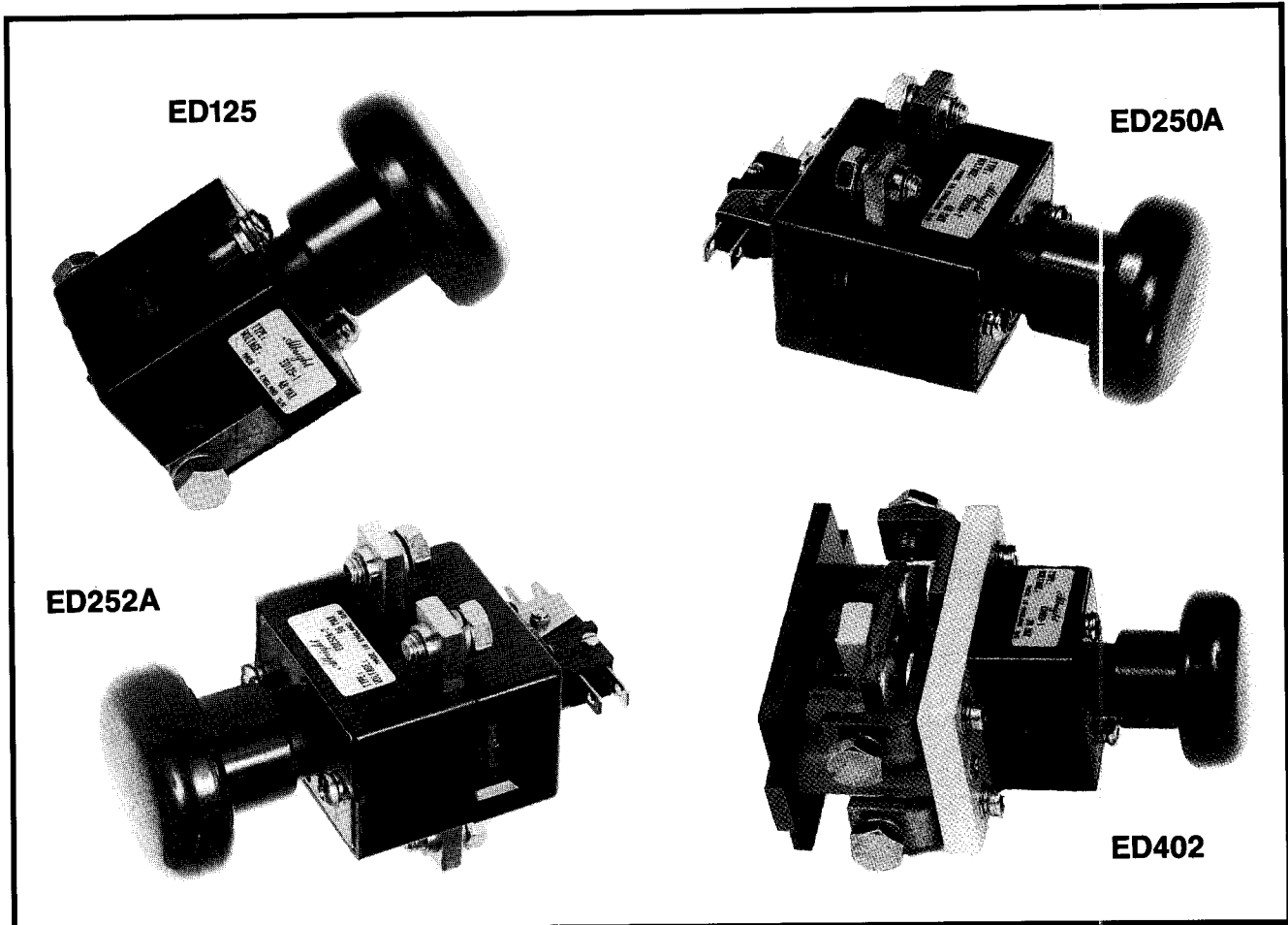




ALBRIGHT INTERNATIONAL LTD
ALBRIGHT (Engineers) LTD

HEAVY DUTY D.C. BATTERY DISCONNECTING SWITCHES

ED125, ED250, ED252 AND ED402 TYPES



Type No.	Description	Max. continuous thermal current rating (amperes)	U.L. File No.
ED125	S.P. On/Off	125	Au2378
ED250	S.P. On/Off	250	Au2378
ED252	D.P. On/Off	250	E181430
ED402	D.P. On/Off	400	E181430

UNIQUE RANGE

These disconnecting switches have been designed to provide a rapid means of isolating batteries in the event of serious electrical faults.

The Switches are capable of safely rupturing full load battery currents

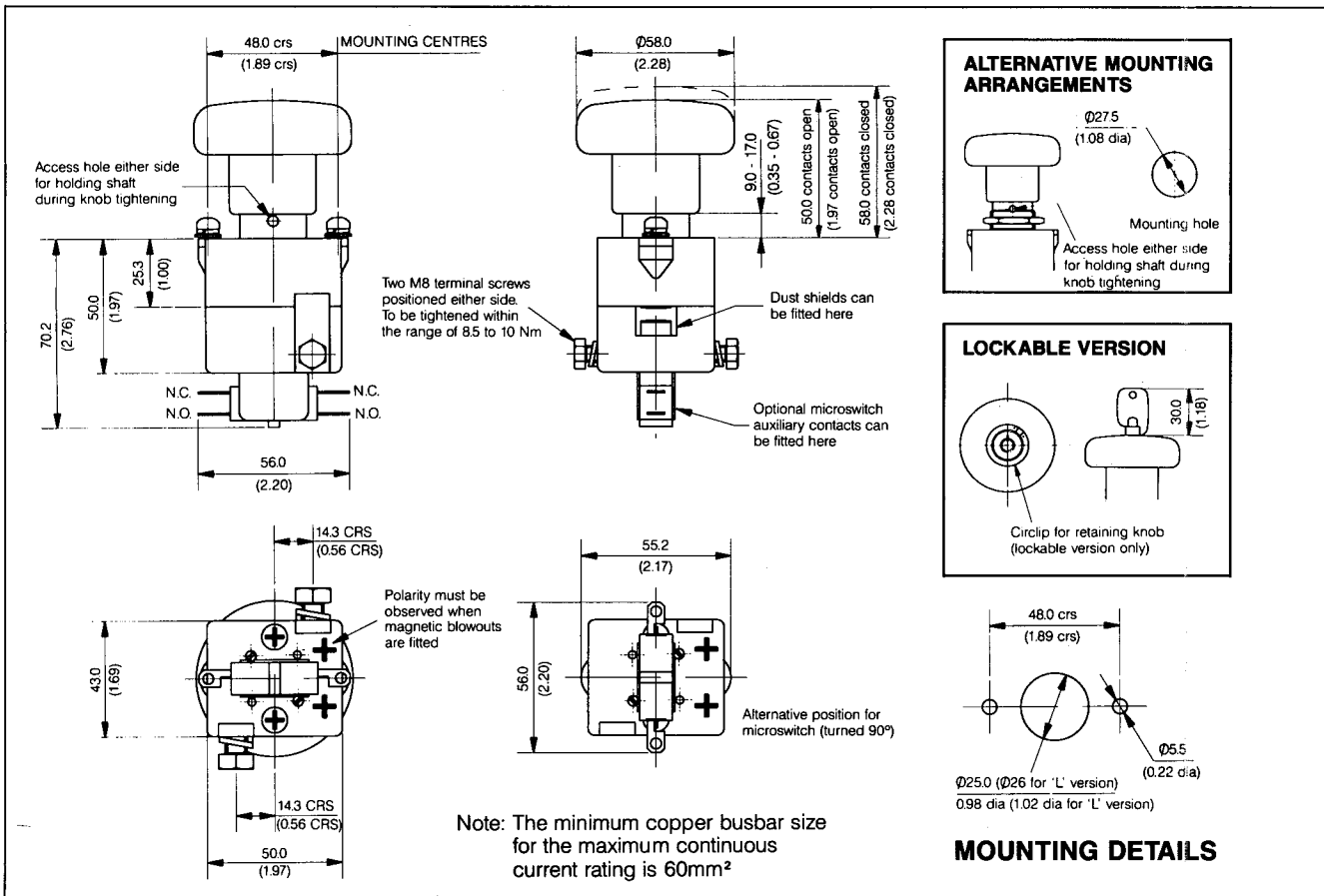
in the event of such an emergency.

They have double breaking main contacts with silver alloy contact tips which are weld resistant, hard wearing and have excellent conductivity. 'Snap Action' operation for both opening and closing is provided by means of a simple overcentre spring device.

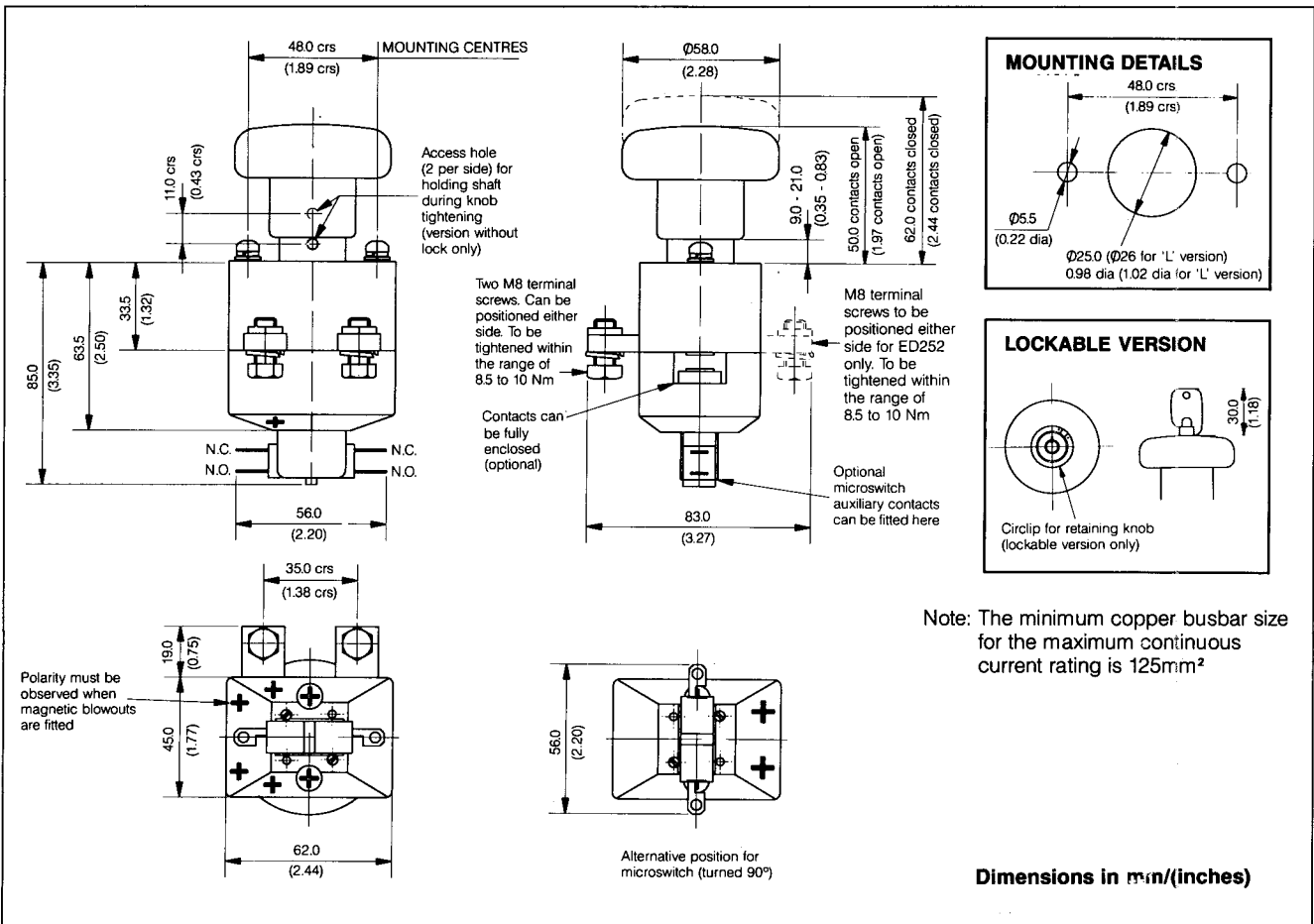
The switches are also compact in size and are fully serviceable, with replacement contacts being readily available.

cont on page 3

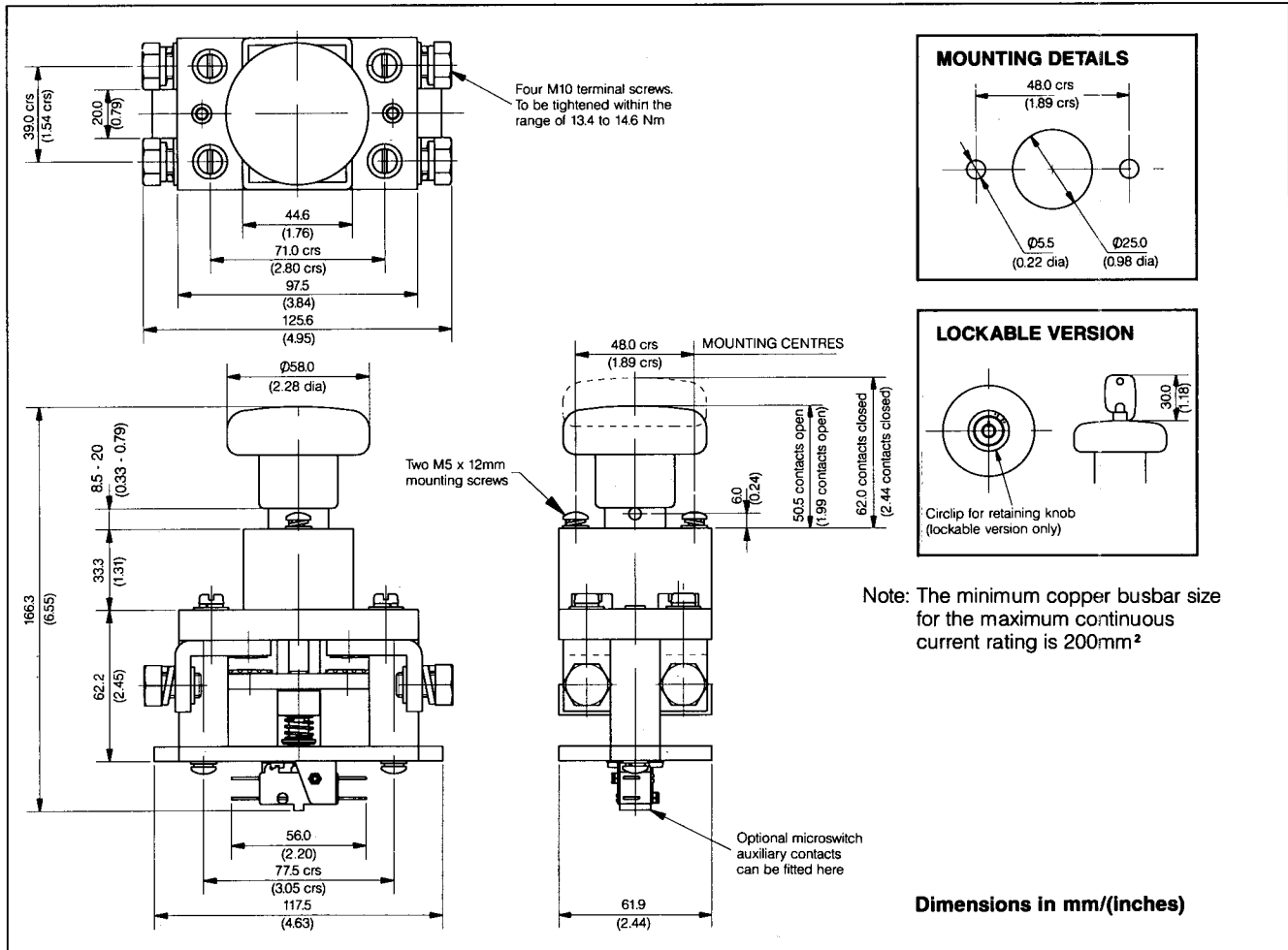
ED125 DIMENSION DRAWING



ED250 AND ED252 DIMENSION DRAWING



ED402 DIMENSION DRAWING



MAGNETIC BLOWOUTS 'B'

All versions can be fitted with magnetic blowouts except ED402. These are permanent magnets situated across the contact gaps and they greatly enhance the arc rupturing capability of the switches.

The suffix 'B' indicates the fitting of magnetic blowouts.

NOTE: For single pole types fitted with blowouts (ED125B and ED250B) the polarity marked on the contact housing must be observed when connecting the main terminals.

AUXILIARY CONTACTS 'A'

A double circuit normally open, normally closed microswitch auxiliary contact can be fitted. This has a D.C. resistive rating of 15A at 24V and the suffix 'A' applies.

The auxiliary contact can be set to operate either before or after the main contacts open, according to the circuit requirements.

Unless otherwise specified the auxiliary contact will be set to operate in advance of the main contact opening.

LOCKABLE VERSIONS 'L'

The switches can be fitted with an integral lock.

If a fault occurs and the switch is opened, it cannot be closed again without the aid of a key.

The suffix 'L' applies for lockable versions.

ENCLOSED TOP COVERS

The top covers can be enclosed except for type ED402. This should be specified when the switches are to be used in environments where there is airborne contamination.

EASY INSTALLATION

Mounting is by means of two 5mm screws and details of the fixing centres are shown on the drawings in this brochure.

For the standard versions (without lock) operating knobs are affixed by an 8mm thread and for the lockable versions knobs are retained by a circlip.

PRECAUTIONS

Ensure that the switches are installed in a position where heavy arcs emanating from the switch cannot damage or electrically jump across to adjacent parts.

For the standard version (without lock) ensure that the knob is fully tightened. A 5mm hole in the tubular shaft housing allows a bar to be inserted which will prevent the shaft from turning during knob tightening.

Use the disconnect switches to rupture current in an emergency or as a 'no load' isolator. Do not use them as regular 'on load' switching devices.

No regular maintenance is necessary but in the event of an emergency switching, the switches should be inspected and checked for correct operation before putting back into use.

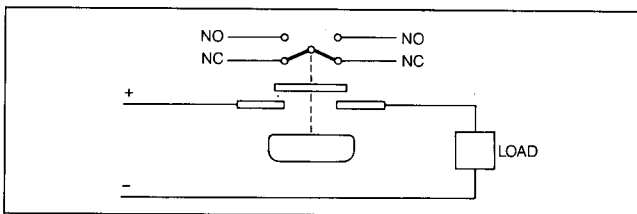
PERFORMANCE DATA

Type No.	Overload currents that can be ruptured (resistive load) See Note 4		Maximum recommended contact voltages (D.C.)		Typical voltage drop across contacts per 100 amps (per pole)	Weight of switch (grams) See Note 1
	Without blowouts	With blowouts	Without blowouts	With blowouts		
ED125	800 amps at 48v D.C.	800 amps at 80v D.C.	48	96	40mV	300
ED250	1000 amps at 48v D.C.	100 amps at 96v D.C.	48	96	30mV	450
ED252	1500 amps at 48v D.C.	1500 amps at 96v D.C.	96	150	40mV	520
ED402	600 amps at 60v D.C.		96		30mV	1000

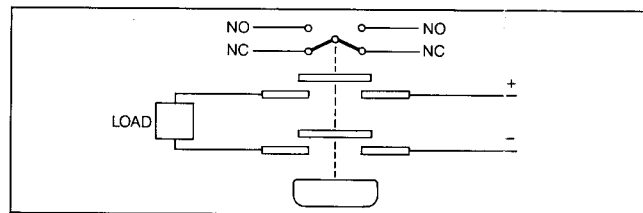
NOTES

- 1 Add 20 grams for auxiliary contacts. Add 60 grams for a lock.
- 2 Auxiliary contacts: Thermal current rating (100%) 15 Amperes
Switching capacity (resistive load) 15A at 24V, 10A at 48V, 5A at 96V
- 3 All the above figures should be used as a guide only. Some derating may be necessary according to type and application
- 4 Overload currents that can be ruptured using ED125, ED250 and ED252 are in accordance with Au2378. For ED402 they are in accordance with UL508.

ELECTRICAL SCHEMATIC ED125A & ED250A

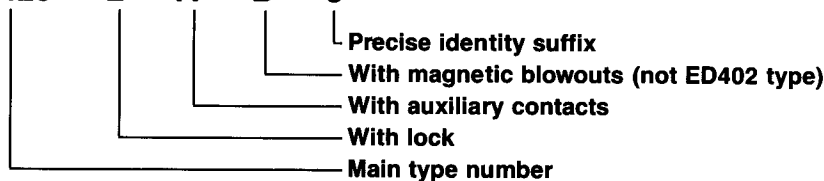


ELECTRICAL SCHEMATIC ED252A & ED402A



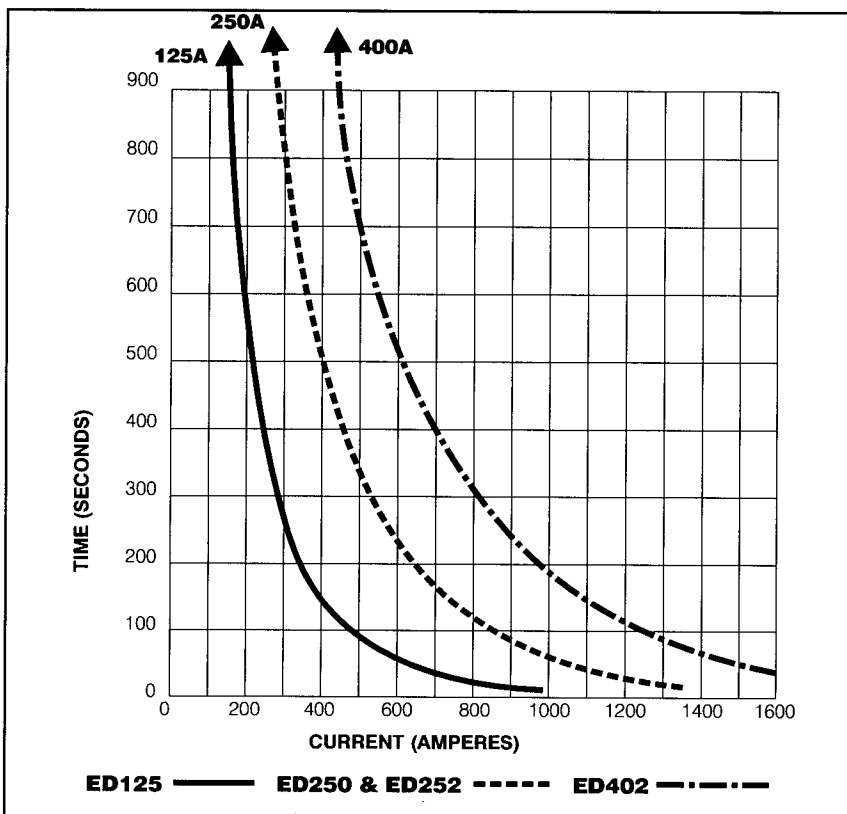
EXPLANATION OF TYPE NUMBERS

ED125 - L - A - B - 3



NOTE: The thermal current ratings stated for the switches in this brochure are dependent upon the correct size of busbar being used for the required duty. For maximum continuous ratings the busbars should not be less than the sizes shown in the drawings on pages 2 and 3.

CONTACT PERFORMANCE (Intermittent ratings)



GLOBAL INDUSTRIAL PRODUCTS

SPECIALISTS IN ADVANCED
OEM COMPONENT
TECHNOLOGIES

20 N. WACKER DRIVE
SUITE 1741
CHICAGO, ILLINOIS 60606 U.S.A.
800.951.8774
FAX 312.251.8776
E-MAIL sales@globalepower.com
www.globalepower.com

