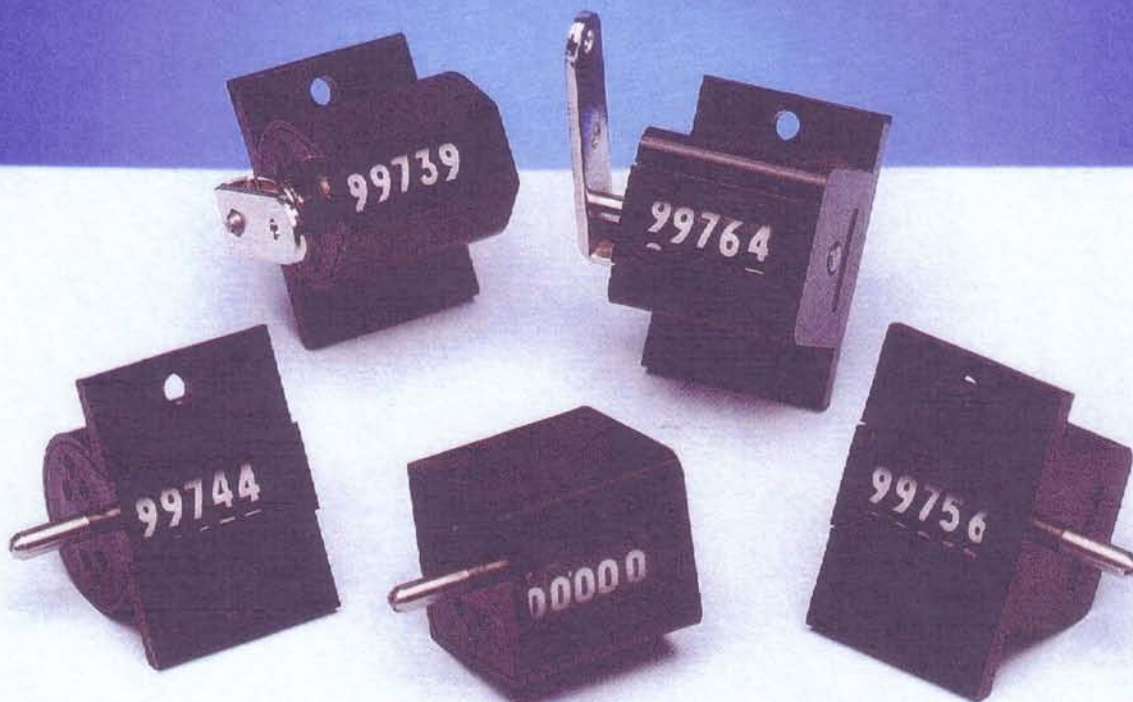


SMALL NON - RESET COUNTERS

SERIES 4225



Compact Security Counter

Precision Engineered in Moulded
Plastic and Stainless Steel

High Accuracy and Reliability

Clear White Figures on
Black Background

Applications:

- Drink Dispenser
- Business and Office Equipment
- Ticket Issuing Machines
- Circuit Breakers
- Vending Machines
- Amusement and Gaming Machines
- Hour Meters
- Fishing Reels

Global Industrial Products



www.globalepower.com

Phone: 1-800-951-8774

Fax: 1-847-901-4036

Email: sales@globalepower.com

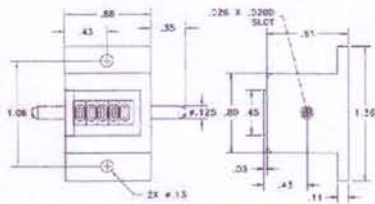
STANDARD SPECIFICATION

5 digits
 Black figures on white background
 4.1mm (0.160in) high, 2.2mm (0.088in)
 wide 0.7mm (0.033) stroke

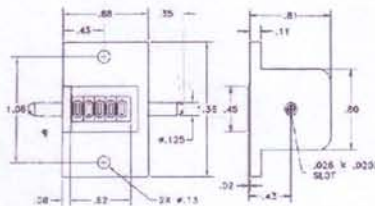
Revolution
 Adds or subtracts one count for each complete revolution of the input shaft.
Direct Drive
 Adds or subtracts ten counts for each complete revolution of the input shaft.
Rotary Ratchet
 Adds ten counts for each complete revolution of the input shaft. Reverse rotation will not subtract counts.
Oscillation of the input shafts through 36° to 60° adds only one count.
Ratchet with Stops (With return action spring)
 Stop to stop movement - typically 45° to 48°
 Movement to count - typically 40° to 45°
 A Non-overthrow Mechanism is incorporated in both ratchet types to eliminate the possibility of double counting under normal operating conditions. On Rotary Ratchet counters, this is effective for only 19° beyond each indexing position.

Revolution Drive - 3,000 counts per minute continuous.
Direct Drive - 15,000 counts per minute continuous.
Rotary Ratchet - 3,000 counts per minute continuous.
1,500 counts per minute at peak when used as an oscillating counter.
Ratchet with Stops- 1,000 counts per minute.

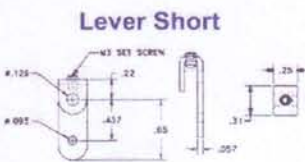
Revolution and Direct Drive - 1mNm (0.14oz in)
Rotary Ratchet - 2mNm to 7mNm (0.28oz in to 0.98oz/in)
Ratchet with Stops - 6mNm to 14mNm (0.84oz in to 1.96oz/in)
 All above at 25°C



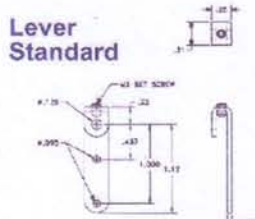
Square Case Base Mount



Square Case Panel Mount



Lever Short



Lever Standard

Specifications subject to change without notice.

Left Hand or Right Hand

Top Going or Top Coming

Square or cylindrical with Flange at Base or Flange at Window.

Flange at Base and Flange at Window, single hole fixing on each flange. Alternatively, four holes at the left end of the case will accept 2mm rolled or cut thread screws. (Left end when reading the figures).

Durable plastic. Input shaft - superfinished stainless steel.

10 grammes approx.

STANDARD MODELS

| CODE | METHOD OF DRIVE | SHAFT EXTENSION | DIRECTION OF DRIVE | TYPE OF MOUNTING | CASE PROFILE | NUMBERS/WHEELS |
|------|--------------------|-----------------|--------------------|------------------|--------------|----------------|
| 0 | — | — | — | — | CYLINDRICAL | — |
| 1 | REVOLUTION | LEFT | TOP GOING | FLANGE AT BASE | SQUARE | WHITE ON BLACK |
| 2 | DIRECT | RIGHT | TOP COMING | FLANGE AT WINDOW | — | — |
| 3 | ROTARY RATCHET | — | — | — | — | — |
| 4 | RATCHET WITH STOPS | — | — | — | — | — |

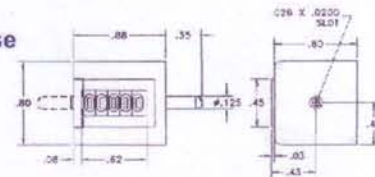
OPTIONAL EXTRA - STANDARD LEVER 001 - SHORT LEVER 002

e.g. 4225 - 121- 112 - 001

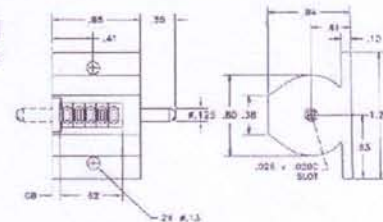
Revolution, Right Hand, Top Going, Flange at Base, Square, White on Black Wheel 001 Lever

For non standard requirements and open barrel counters please contact our sales office.

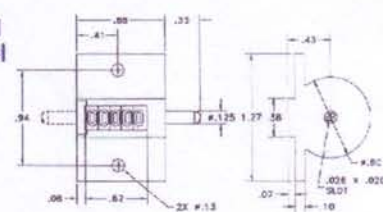
Square Case without Flange



Cylindrical Case Base Mount



Cylindrical Case Panel Mount



Global Industrial Products

www.globalepower.com

Phone: 1-800-951-8774

Fax: 1-847-901-4036

Email: sales@globalepower.com

