



CANADIAN SHUNT INDUSTRIES LTD

80 BULLOCK DRIVE, UNIT 1, MARKHAM, ONTARIO L3P 3P7

USA & Canada : 1-800-433-5604 TEL: (905) 294-5274 FAX: (905) 294-6096

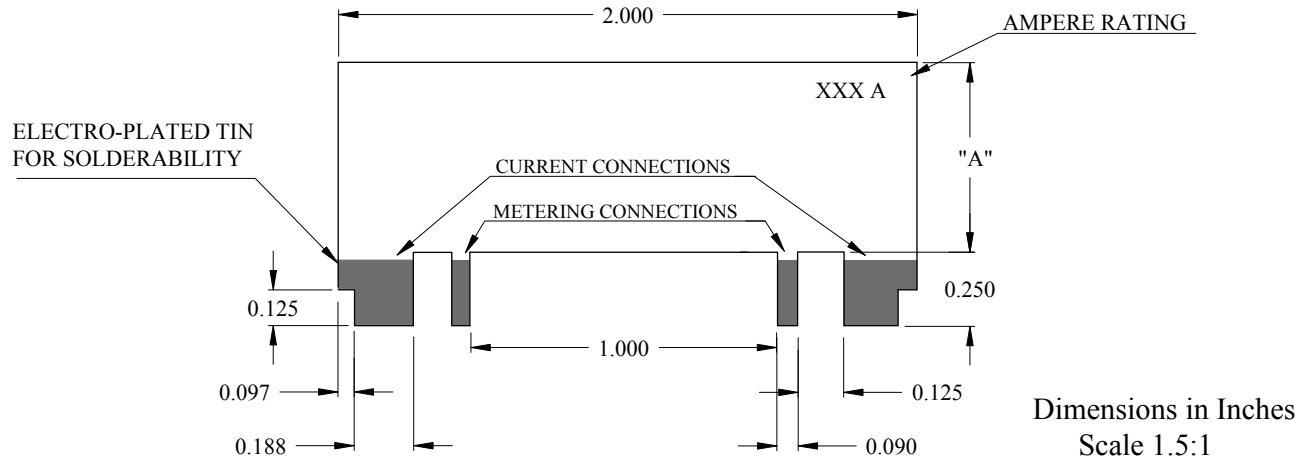


Technical Data Sheet

PRINTED CIRCUIT BOARD SHUNTS

Type PCB

10 to 150 Amps



SELECT A THINNER, HIGHER SHUNT		AMPERES AT 50mV															
SHUNT	SHUNT THICKNES	10	12	15	20	25	30	40	50	60	75	80	100	120	125	150	
BJ	0.020"	0.19	0.23	0.29	0.38	0.48	0.57	0.76									
BH	0.028"			0.20	0.27	0.34	0.41	0.54	0.68	0.82							
DE	0.045"					0.21	0.26	0.34	0.43	0.51	0.64	0.68	0.85				
EG	0.057"						0.20	0.26	0.33	0.40	0.50	0.53	0.66	0.79	0.83		
FD	0.064"							0.24	0.30	0.36	0.45	0.48	0.60	0.72	0.74	0.89	
SELECT A THICKER, LOWER SHUNT		DIMENSION "A" IN INCHES (+0.05")															

How to determine the part number for your application:-

e.g. For a 60Amp shunt with dimension "A" at 0.51" the part number would be PCB-DE-60-50

For 25mV, 60mV and 100mV ranges please contact the factory.

STANDARD ACCURACY +1%
 MAXIMUM ACCURACY +0.1%
 TCR ±15ppm/ C°

For requirements outside of the above parameters
 please contact the C.S.I. Engineering Dept.