

## LCD Totalizer Type Series 185



R.100.613

### Description:

- 8 digit LCD Totalizer
- Clearly readable due to leading zero blanking
- Power supply and data retention by an integrated lithium battery up to 10 years at 20°C ambient temperature.
- Slow speed count input up to 30 Hz (contact closure)
- High speed count input (NPN), max. 2.5 kHz.
- Manual and electrical reset
- Reset button to be enabled/disabled
- DIN standard housing 48 x 24 mm with clip mount
- Additional bezel for screw mount
- Front IP 65 protected



### Type Series

| Type          | Count inputs  |            |                              | mode of connection                         |
|---------------|---------------|------------|------------------------------|--|
|               | voltage level | slow speed | max. frequency<br>high speed |  |
| 0.185.012.830 | 3–18 VDC      | 30 Hz      | 2.5 kHz                      | plug-on connector with 25 cm flying leads* |
| 0.185.012.831 | 5–240 VAC/VDC | 18 Hz      | —                            | screw terminal                             |

\* Adaptor for screw terminal connection N.510.228 available

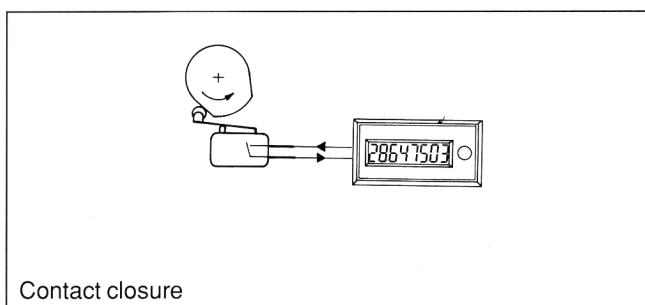
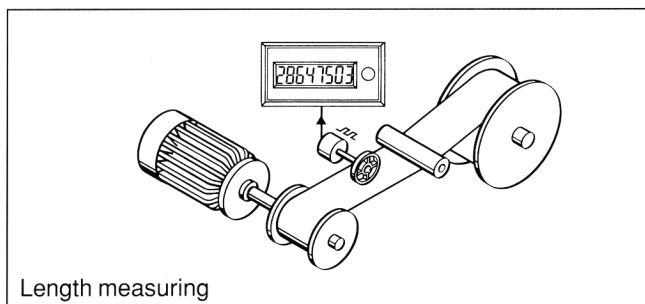
### Applications

- General Counting
- Devices without external power
- Counting directly from contact closure

### Technical Data:

- Power supply: Internal lithium battery (approx. 10 years life at 20°C)
- Display: LCD, 8 digits, 7 mm high characters
- Counting mode: adding
- Count range: 99999999, rollover to 0

### Examples for applications



### Inputs:

#### Reset:

- Static reset input; no counting while this input is connected to 0 V
- Min. pulse length: 25 ms
- Contact closure / open Collector NPN (switching to 0 V)

#### Reset enable:

- Electrical enabling of the reset button
- Contact closure input switching to 0 V (link to 0 V to enable reset button)

#### Count inputs: (Type 0.185.012.830)

##### Slow speed count input

- max. count frequency: 30 Hz
- min. pulse length: 16 ms
- negative edge triggered (NPN)

##### High speed count input

- max. count frequency: 2.5 kHz
- min. pulse length: 0.2 ms
- negative edge triggered (NPN)

#### Input sensitivity:

- Low: 0–0.7 VDC
- High: 3–18 VDC

**Count input** (Type 0.185.012.831)

max. count frequency: 18 Hz  
 min. pulse length: 28 ms  
 triggering at high signal

**Input sensitivity:**

Low: < 1 VAC/VDC  
 High: 5–240 VAC/VDC

Colour of case: black

Ambient temperature: –10°C...+60°C

Storage temperature: –10°C...+60°C

Protection: IP 65 (front)

**Weight:**

0.185.012.830: 30 g  
 0.185.012.831: 42 g

**Ordering Code:**

**0.185.012.830** (flying leads, voltage 3–18 VDC)

**0.185.012.831** (screw terminal, voltage 5–240 VAC/VDC)

**Delivery includes:**

Counter with clip mount

Mounting bezel for screw mount

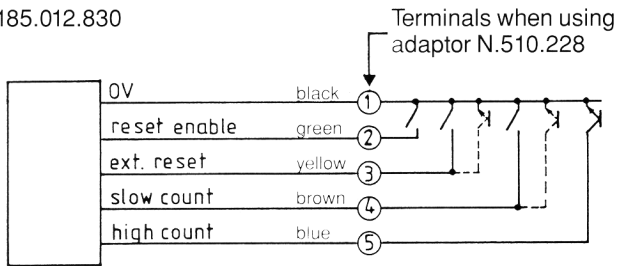
**Accessories:**

Adaptor for screw terminal connection **N.510.228** suitable for Type 0.185.012.830.

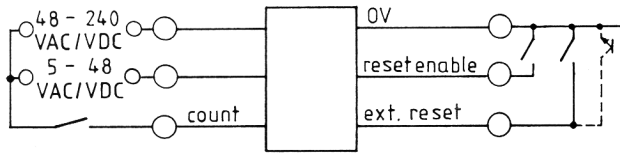
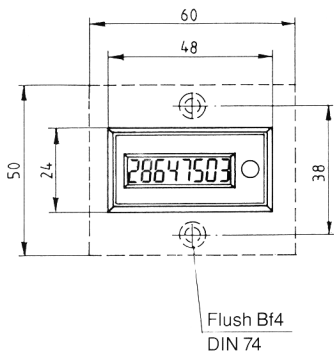
Screw terminal adaptor for high voltage input pulses from 5–240 VAC/VDC **N.510.229** suitable for Type 0.185.012.830.

**Connections:**

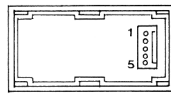
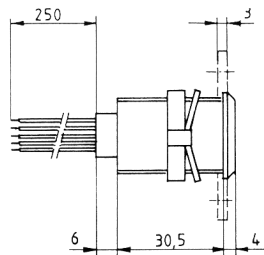
0.185.012.830



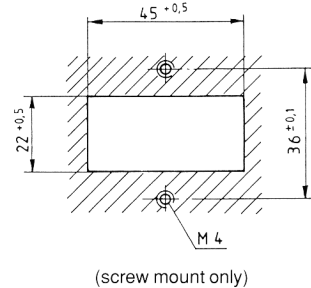
0.185.012.831

**Dimensions:**

0.185.012.830



Panel cut-out



0.185.012.831

