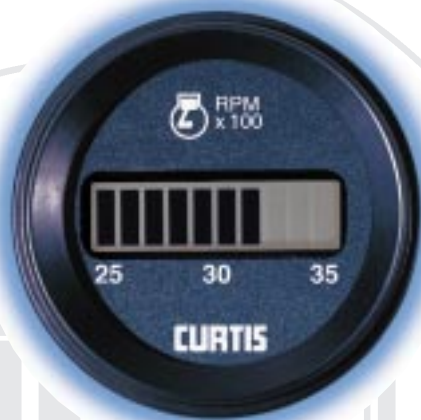


MINI-TACHOMETER MODEL 2315R

CURTIS

1960 • 2000



DESCRIPTION

The Model 2315R Mini-Tachometer is a fully solid state tachometer in a 52mm round case, allowing for a low cost, simple instrument with over/under speed outputs.

Based on a custom integrated circuit, this instrument offers OEMs unprecedented flexibility in design at a cost comparable to traditional needle pointer gages.

WARRANTY

Three years from date of delivery.

Application

Ideal for use with stationary equipment, such as generators and compressors. Also designed to meet the needs of small construction, material handling and agricultural vehicles.

Features

- An easy to read 10 segment LCD display eliminates moving parts such as needle pointers that can reduce the instrument's reliability in high shock and vibration applications.
- Based on a state of the art custom chip design, each of the 10 segments of the tachometer display can be individually programmed by Curtis, allowing OEMs to expand the resolution of regions of special interest.
- Can be programmed by Curtis to accept a variety of sensor inputs, including alternator R terminals, ignition system signals and magnetic pickups. Different frequencies, pulley ratios and number of alternator poles can be compensated for in the factory programming of the tachometer.
- High and low speed display segments flash to capture the user's attention.
- Logic level output signals for over and under speed can be used to control unsupervised equipment.
- Shallow behind-panel depth – typically, these instruments require less than half the depth of conventional electro-mechanical instruments.
- Single segment pointer or rising bar graph display modes.
- LCD backlighting optional.

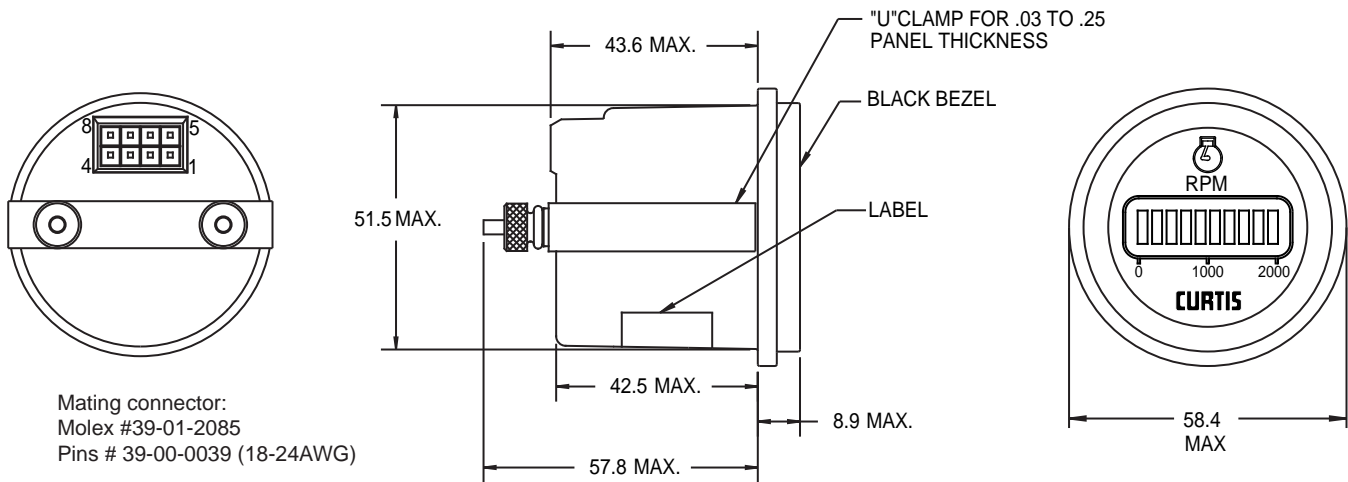
Specifications

OPERATING TEMP. RANGE	-40°C to +85°C
STORAGE TEMP. RANGE	-50°C to +90°C
MECHANICAL SHOCK	SAE J 1378 March 83. Amplitude 44-55g, half sine, 9-13ms duration.
VIBRATION	SAE J 1378 March 83. Double amplitude of 1.53mm with frequency sweep for 10-80-10 Hz (20g max) at 1 minute intervals.
SIGNAL OUTPUT FORMAT	Logic level, 0 to 5V or 5V to 0, programmable. Capable of sinking or sourcing 50 µA, max.
HUMIDITY	95% RH (NON-CONDENSING) AT +38C.
SEALING	IP-65 (FACE), IP-50 (REAR).
CONNECTIONS	Six 0.25 inch quick connect terminals.
OPERATING VOLTAGES	12VDC NOMINAL (9VDC TO 16VDC RANGE). 24VDC NOMINAL (18VDC TO 32VDC RANGE).
CASE	Polycarbonate, black.
LENS	Glass.
BEZEL	Aluminum, black anodized.

Model Encodement

2315 Model number	R Round	12 Voltage	-0001 Sequential number identifies gage programming	00 Artwork code
-----------------------------	-------------------	----------------------	---	---------------------------

Dimensions mm



Options

For custom designed gages and option details please contact Curtis.

Pin Assignment

- 1 Sender
- 2 Battery +
- 3 Ground
- 4 Sender Low (for two wire senders only)
- 5 Higher output
- 6 Lower output