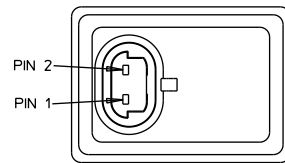


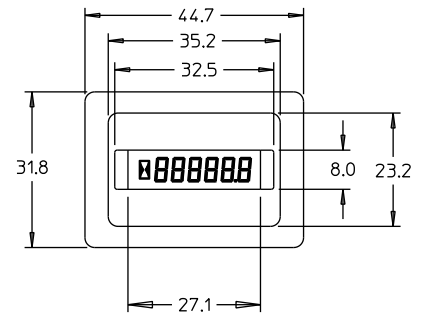
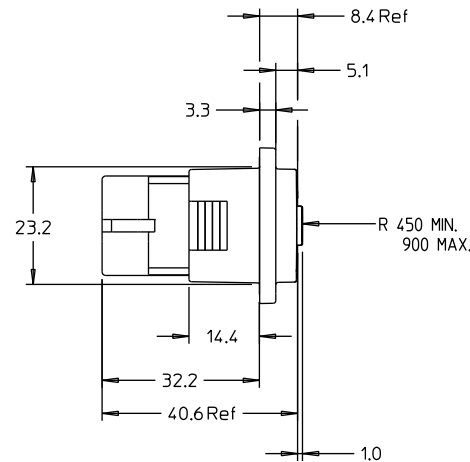
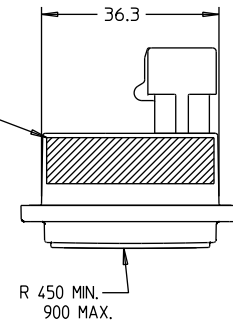
NOTES:

- 1.0 MATING CONNECTOR: PACKARD METRI-PACK SERIES P/N 12052644.
- 2.0 WEIGHT: 30 GRAMS MAX.
- 3.0 CASE MATERIAL: ABS BLACK
- 4.0 COVER MATERIAL: ACRYLIC, CLEAR.
- 5.0 OPERATING VOLTAGE: 12-48DC/20-60AC
- 6.0 THIS UNIT IS DESIGNED FOR A MOUNTING PANEL
THICKNESS OF 0.8 mm - 6.4 mm.
- 7.0 RECOMMENDED PANEL CUTOUT SIZE 36.8mm X 24.1mm ±.25mm.
- 8.0 MAY BE USED WITH A MOUNTING BRACKET: CURTIS P/N 17607800
CONTAINS 100 BRACKETS.
- 9.0 ENVIRONMENTAL PROTECTION: FRONT IP-65, REAR WITH MATING CONNECTOR
INSTALLED IP-65

PIN #	FUNCTION
1	B+
2	Common



ADD LABEL TO THIS AREA:
ORIENTATION NOT IMPORTANT
LINE 1 - AM131428
LINE 2 - DATE CODE PER DWG 15567001
LINE 3 - MADE IN CHINA
LINE 4 - PAT. 4712195



NOTICE
THE REVISION LEVEL OF
THIS DOCUMENT MUST
BE VERIFIED FOR LATEST
ISSUE BEFORE USE.

REVISIONS

SYM.	ECN	DESCRIPTION	DATE	APPR
1	----	Created Dwg from SK2730010 rev 2. P/N was 17491001. Added 32.5 x 8 Raised Section to Front Panel, Mod. Case so Mt. Brkt can be used w/ G case		RM
2	----	14.6 was 14.7, Represented Mounting Bracket Properly.		RM
3	----	Mod Cover Per Housing Supplied by JD	1/26/01	VAI
A	9338	ADDED LABEL INFO, RELEASED TO PRODUCTION	3/20/01	VAI
B	9401	Dimension: 23.2 was 24.0, 14.4 was 14.6, 40.6 was 40.0, 8.4 was 7.8, 5.1 was 4.5, Mirrored connector housing - upper fl. view, Added 27.1 dim	3/28/01	VAI
C	9466	ADDED DIM. 31.8, REVISED RAD DIM: 450/900 WAS 727.9		DR

FOR REFERENCE ONLY

RELATED DRAWINGS

UNLESS OTHERWISE SPECIFIED DIMENSIONS ARE IN (MM)	
TOLERANCES	
0 PLACE DEC ±	1 PLACE DEC ±0.3
2 PLACE DEC ±	3 PLACE DEC ±
4 PLACE DEC ±	±

APPROVALS		DATE
MFG.	BR	1/26/01
O.A.	AJR	1/29/01
ENGR.	VAI	1/26/01
ENGR.		
CHECKED		
DRAWN	RM	1-6-00
MKTG	CH	2/9/01
DO NOT SCALE : USE DIMENSIONS		
SCALE 1 : 1		

CURTIS INSTRUMENTS INC. Mount Kisco, N.Y. 10549

OUTLINE AND INSTALLATION
700HN011NG1248D2060A

CODE IDENT. NO. 18583	B	17607001	C
SIZE	SHEET	1 of 1	REV