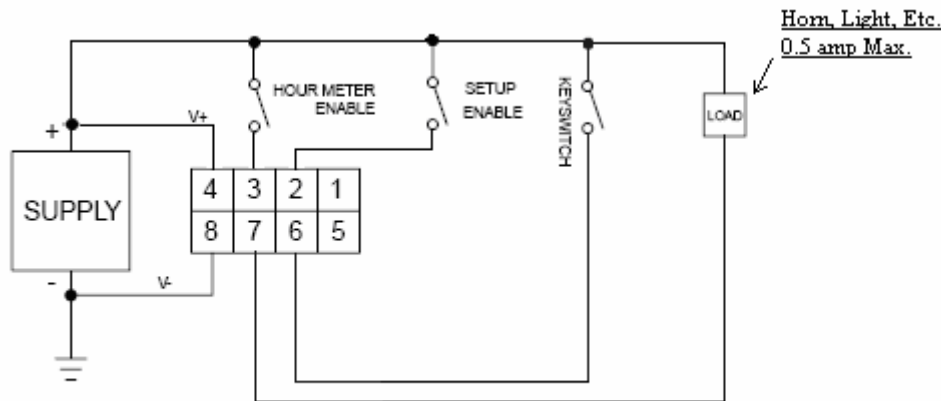


INSTALLATION AND OPERATION
 PREVENTATIVE MAINTENANCE MONITOR
 WITH INTEGRATED PHONE NUMBER

1. Mount unit in standard SAE 2" round hole.
2. Connect supply voltage to connector pins as indicated
3. Connect pin 6 as appropriate for keyswitch to enable display
4. Connect pin 3 as appropriate to activate the hour meter.
5. Connect pin 2 to a hidden switch.
6. Connect pin 7 to an audio, visible or other warning device if desired. Note the maximum current limitation



Initial set up

1. Connect the gage to the supply voltage. Note that the display does a momentary self test which shows the 10 bars, symbols and all 8's.
2. With the supply voltage applied close the keyswitch. Note that the LCD display will show all ten bars and 00:00 time of day
3. To set the time of day press and hold the Left Button for approximately 3 seconds until the first 2 digits flash. Press the Right Button to advance the clock to the desired hour
4. Press the Left Button to advance to the minute portion of the display. Press the Right Button to advance the clock to the desired minute
5. Press the Left Button to advance the display to show current maintenance hours.
6. Press the Left Button to advance the display to show total hours
7. To begin counting maintenance hours close the Hour Meter Enable switch. An hour glass symbol will begin to pulse indicating accumulating hours.

Resetting the maintenance period

1. Apply + voltage to the set up enable pin (2).
2. Scroll using the Left Button until the wrench symbol appears.
3. Press and hold the Right Button. Then press the Left Button
4. When the maintenance hours flash release the Right Button then the Left Button.
5. You have now reset the maintenance period to 100% remaining
6. Open the enable switch to remove the + voltage from pin 2. This locks in the maintenance period.
7. All 10 bars should appear in the display as the new maintenance period begins

Changing the maintenance period

1. Apply + voltage to the set up enable pin (2).
2. Press and hold the Left Button until the display flashes the current hour and minute.
3. Scroll with the Left Button through the clock settings to the 4 digit maintenance settings.
4. A 4 digit display will appear showing the current maintenance period and the left most digit will pulse. Use the Right Button to change the number displayed and the Left Button to advance to the next digit. Press the Left Button after advancing through all four digits to enter the new maintenance period.
5. To reset the unit to the changed maintenance period follow steps 3 through 7 (Resetting the maintenance period) above.

NOTE: When the maintenance period expires the Gage will automatically scroll through and display sequentially clock, maintenance hours since last reset, total machine hours and service telephone number.

3/9/05