

Features...continued

- Internal clamps for inductive fly-back of coils.
- Controller over-temperature protection.
- Over and under-voltage protection.
- Low battery charge LED warns operator of possible battery damage.
- On-board fault code status LED with external LED driver for remote viewing of fault codes.

Options

- Internal main contactor.
- Multiplexed control signals to reduce vehicle/ tiller wiring.
- Auxiliary outputs (2) for relays, horn or solenoid control.

Meets US and International Regulations

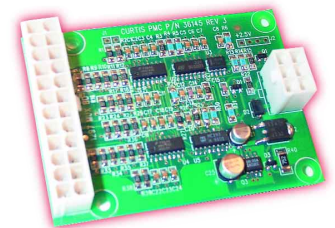
EN50081-2 emissions
EN50082-2 immunity
IEC 801-2 level 4 ESD
VDE0117
EN1175-1 safety
UL recognized
IP 53 environmental protection

System Accessories



The Curtis Model 840 LCD Multifunction display contains 8 large, easy to read characters to provide display of battery discharge (BDI), hour meter and error messages. Built-in backlight is also available.

Model 1312 Tiller Multiplexer provides monitoring and control capability for up to 12 analog or digital signals from operator controls on tiller. Each signal is sampled every 20 milliseconds for fast response.



The Curtis Model 1311 Handheld Programmer provides a simple and intuitive interface to Curtis products for testing, diagnostics and parameter adjustments.

Model Chart

Model No.	Battery Voltage (volts)	Motor Current 2 min. (amps rms)	Motor Current 1hour (amps rms)	Options		
				Main Contactor	1312 Interface	2 Aux. Outputs
1230-2001	24	60	30	√	√	√
1230-2002	24	60	30			
1230-2101	24	90	40	√	√	√
1230-2102	24	90	40			
1230-2201	24	120	50		√	√
1230-2202	24	120	50			
1230-2301	24	150	60		√	√
1230-2302	24	150	60			

Note: xx01 = Options; xx02 = No Options

For more information please contact your local CURTIS sales office.

Dimensions: mm (inches)

