



## Features...continued

### Robust Safety Features

- Meets or exceeds EEC fault detection requirements. Software and hardware circuitry detects faults in the throttle and power section that could cause unsafe operation.
- Motor and controller thermal protection, cutback, warning and automatic shutdown.
- Designed to meet Global emissions and immunity requirements.
- Rugged sealed housing and connectors designed to meet IP65 environmental protection.

### Meets US and International Regulations:

- The Curtis Model 1236 and 1238 AC Motor Speed Controllers are designed to meet:
  - EN 50081-2:1994 IEC 529
  - EN 61000-6-2:1995 IP65 Rated
  - EN 1175
  - UL Recognized Component Status UL 583

### Model Chart

Model	Battery Voltage V	Current Rating Arms (2 min)
1236-44XX	24-36	400
1236-45XX	24-36	500
1238-46XX	24-36	600
1238-48XX	24-36	800
1236-53XX	36-48	350
1238-54XX	36-48	450
1238-56XX	36-48	650
1236-63XX	48-80	300
1238-65XX	48-80	550

### System Accessories



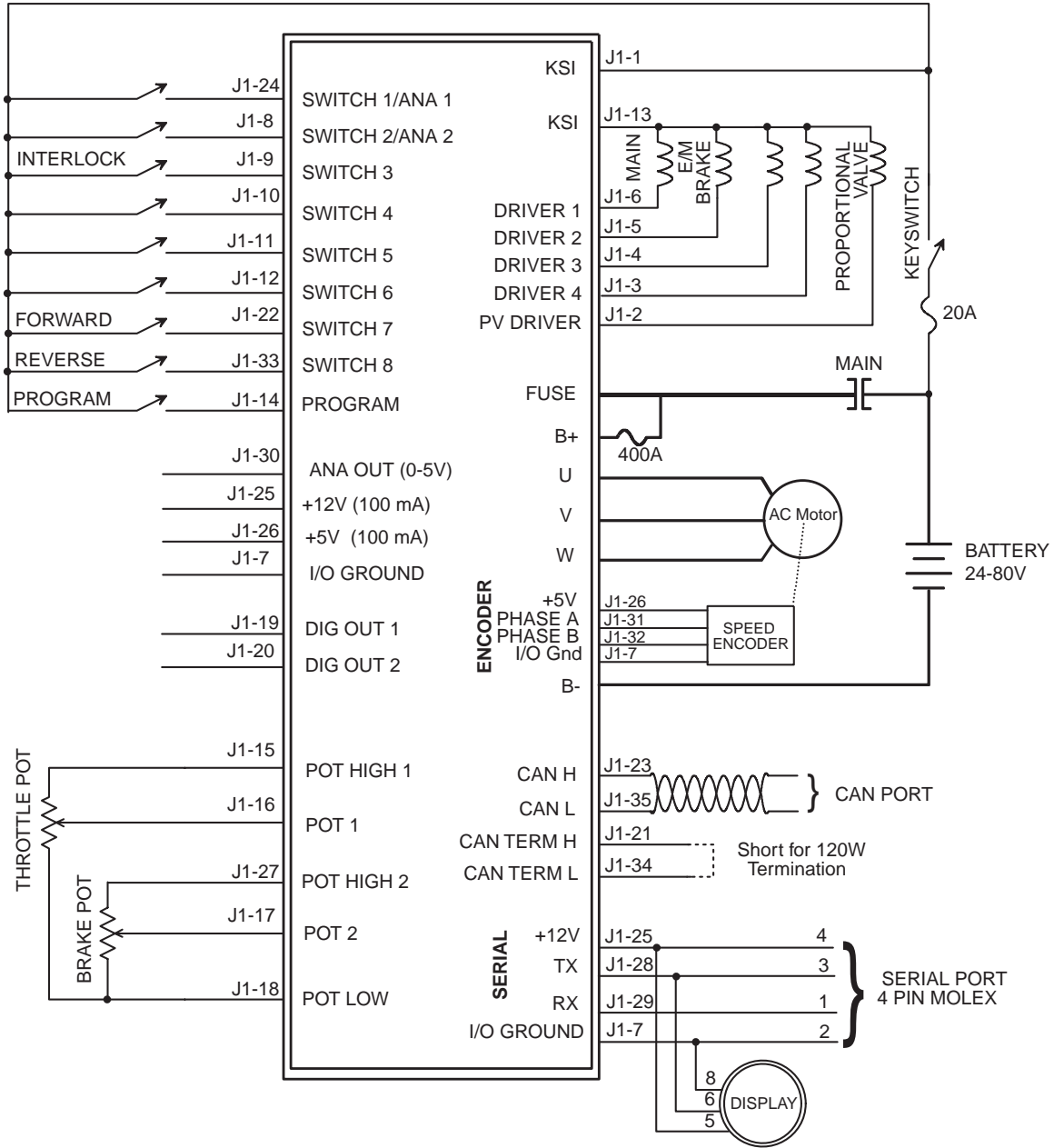
The Curtis Model 840 LCD Multifunction display contains 8 large, easy to read characters to provide display of battery discharge (BDI), hour meter and error messages. Built-in backlight is also available.



The CAN compatible Curtis Model 1311 Handheld Programmer is ideal for setting parameters and performing diagnostic functions.

*Contact Curtis to obtain the VCL Vehicle Control Language compiler and development tools.*

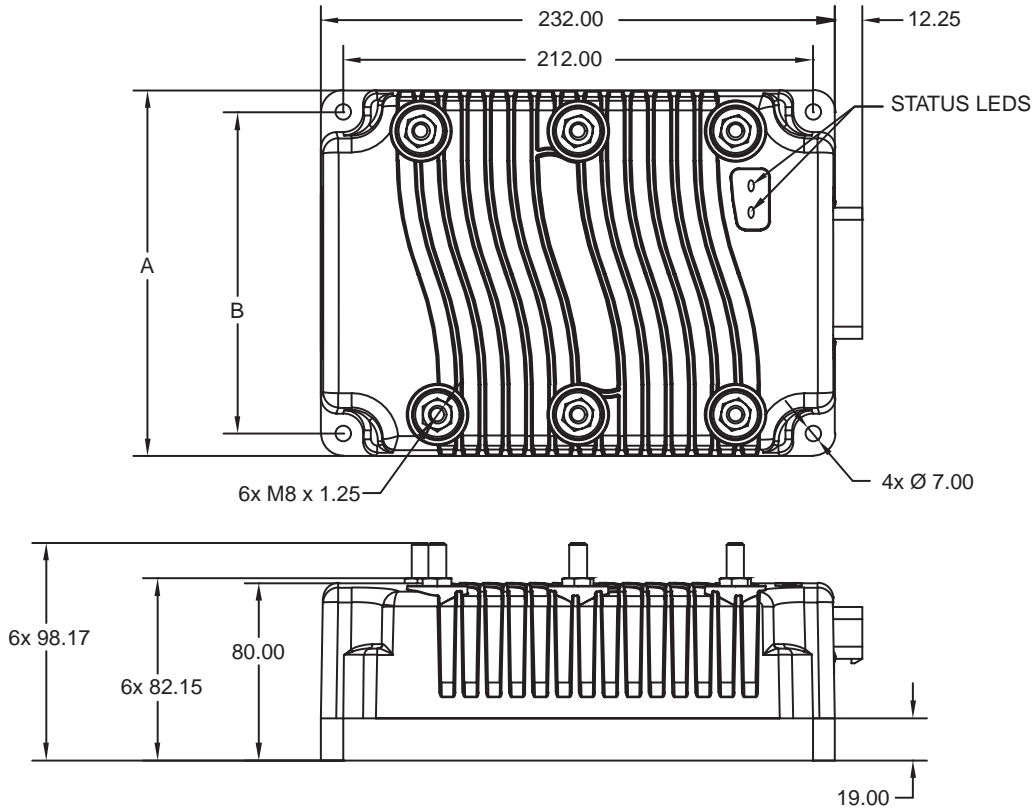
# Typical Wiring



## Dimensions - mm

Model	A	B
1236-XXXX	165mm	145mm
1238-XXXX	275mm	255mm

All other dimensions shown in the drawing are identical for both the 1236 and the 1238 models.



## Connector Wiring

